

Cell Organelle Web Quest

Name _____ Period _____

PART I

Go to: www.wisc-online.com/objects/index_tj.asp?objid=AP11604 Click "Next" to begin the activity. Answer the following questions.

1. What is an organelle?
2. What do ribosomes do?
3. What do they look like?
4. What does the Golgi apparatus (or Golgi bodies) do?
5. What is the function of the mitochondria?
6. What does the nuclear membrane do?
7. What is the function of the nucleus?
8. What is the cell Membrane?

PART II

Go to the interactive cell models at www.cellsalive.com/cells/3dcell.htm.

9. What is the difference between smooth and rough endoplasmic reticulum (ER)?
10. Where is the nucleus found?
11. What is the function of a lysosome?
12. What makes plant cells green?
13. What does a vacuole do?
14. What is the purpose of the cell wall? What type of cell is it found in?
15. What is a chloroplast?
16. What is the purpose of a cell? http://www.ehow.com/facts_5439557_purpose-cell.html
17. What are the two types of reproduction and explain?

http://www.biotopics.co.uk/genes1/asexual_and_sexual_reproduction.html

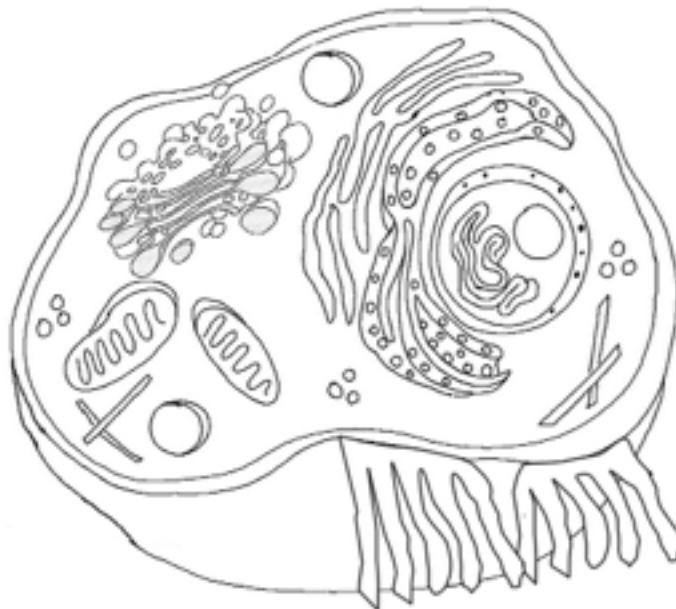
a. _____ - b. _____ -

Cell Organelle Web Quest

18. NOW USE THE PROVIDED WEBSITE LINKS TO HELP YOU LABEL YOUR CELL DIAGRAMS. DON'T FORGET TO DO BOTH THE PLANT AND THE ANIMAL CELL!!!

Animal Cell Coloring: use the following link to assist you: <http://www.enchantedlearning.com/subjects/animals/cell/>

- | | |
|--|--|
| <input type="checkbox"/> Cell Membrane (light brown) | <input type="checkbox"/> Nucleolus (black) |
| <input type="checkbox"/> Cytoplasm (white) | <input type="checkbox"/> Golgi Apparatus (pink) |
| <input type="checkbox"/> Ribosome (red) | <input type="checkbox"/> Cilia (yellow) |
| <input type="checkbox"/> Nuclear Membrane (dark brown) | <input type="checkbox"/> Rough Endoplasmic Reticulum (dark blue) |
| <input type="checkbox"/> Nucleolus (black) | <input type="checkbox"/> Mitochondria (orange) |
| <input type="checkbox"/> Smooth Endoplasmic Reticulum (light blue) | <input type="checkbox"/> Lysosome (purple) |



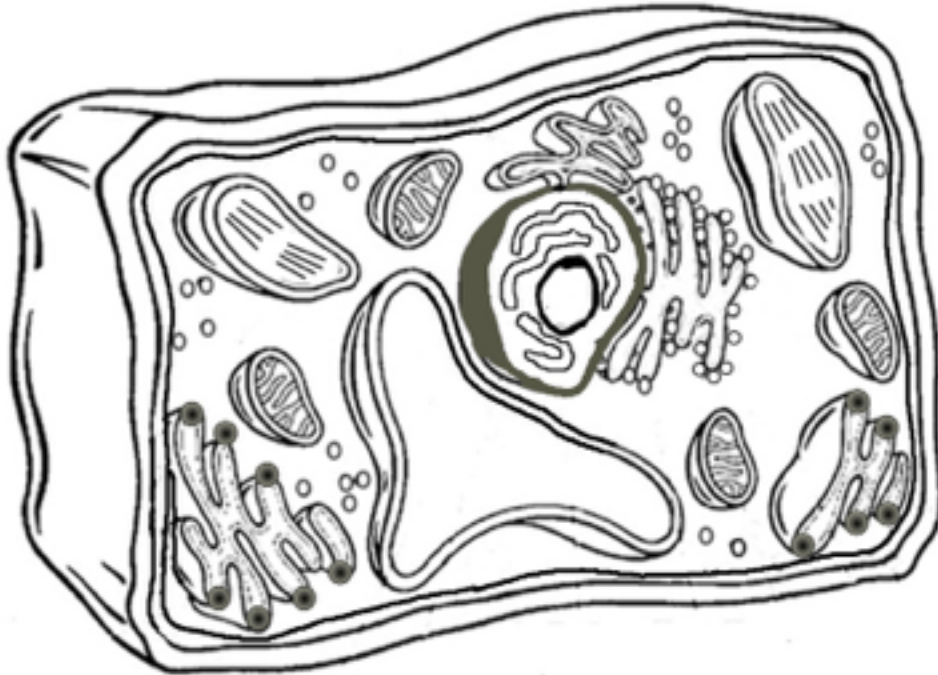
II. Briefly describe the function of the cell parts.

1. Cell membrane _____
2. Endoplasmic Reticulum _____
3. Ribosome _____
4. Golgi Apparatus _____
5. Lysosome _____
6. Microtubule _____
7. Mitochondria _____
8. Nucleus _____

Cell Organelle Web Quest

- Cell Membrane (orange)
- Mitochondria (red)
- Vacuole (light blue)
- Chromosomes (gray)
- Cell Wall (dark green)
- Nucleolus (brown)

- Chloroplasts (light green)
- Smooth Endoplasmic Reticulum (pink)
- Rough Endoplasmic Reticulum (pink)
- Ribosome (purple)
- Cytoplasm (white)
- Golgi Apparatus (dark blue)



Analysis

1. Name two things found in a plant cell that are not found in an animal cell:

2. How does the shape of a plant cell differ from that of an animal cell?

3. What is the function of the chloroplasts?

4. What is the function of the vacuole?

Cell Organelle Web Quest

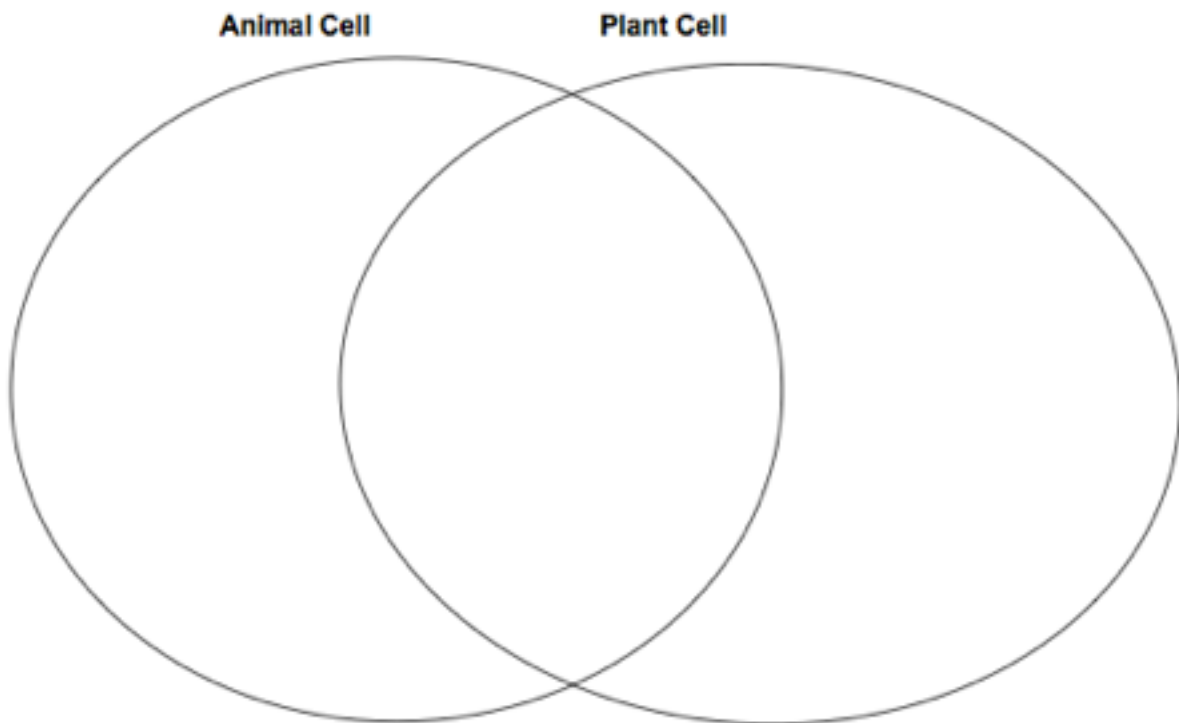
PART III

Go to the Cell Comparison Tutorial

www.omatchclasses.com/cellcomparisons/html/cell_comparisons.html

Click on Animal vs. Plant Cell

14. Complete the Venn Diagram and make a copy of the correct answers here.



You may also try a review game:

Battleship: www.quia.com/ba/15335.html

Matching: www.quia.com/mc/310905.html